



**Wahi Vishwas...
Naya Andaz!**



**apé[®]
Xtra DLX >>>**

*Conditions Apply

Attractive New Features:



Extra Strong Hood



Extra Sturdy & Stylish Body



New Headlamp



Extended Paint Life



Longer Clutch Life



Strong Body + Solid Performance + Profitable Partner

Maximum mileage
36(±4) km/lit.



Xtra strong passenger compartment



Comfortable driver cabin



Additional luggage space



Great pick up



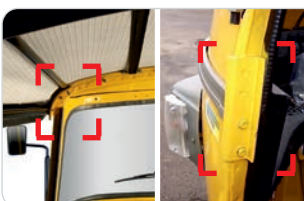
Robust steering column & chassis



Attractive dashboard



Xtra reinforced front dome



- Highest ground clearance
- Strong support to passenger seat
- Strong driver seat back panel
- Improved soft top hood material

The illustrations may show accessories and items of optional equipments which are not part of standard specifications. Piaggio Vehicle Pvt. Ltd. reserves the right change & vary the design, technical details and specifications without prior notice

Technical Specifications

| | |
|---------------------------|---|
| Engine | |
| Type | Single Cylinder - naturally Aspirated Air cooled |
| Displacement | 435.6 cc |
| Max. Power | 8.04 HP (6 Kw) @ 3600 rpm |
| Max. Torque | 21 Nm @ 2400-2200 rpm |
| Transmission | |
| Clutch Type | Multi Disc, Wet type |
| Gear Box | Constant Mesh (4 Forward & 1 Reverse) |
| Suspension | |
| Front | Helical Spring with Dampener |
| Rear | Rubber spring with Dampener |
| Steering | Handle Bar Type |
| Brake | Drum brakes hydraulically actuated internal expanding shoe type |
| Tyre | 4.50-10, 8PR |
| Electrical system | |
| System voltage | 12V DC |
| Battery Rating | 50 Ah |
| Fuel tank Capacity | 10.5 Liters |
| Dimensions (in mm) | |
| Wheel base | 1920 |
| Overall width | 1465 |
| Overall length | 2940 |
| Overall height | 1750 |
| Min. ground clearance | 240 |
| Weights (in Kgs) | |
| Maximum GVW | 725 |
| Kerb weight | 426 |
| Seating Capacity | Driver + 3 passengers |
| Performance | |
| Gradability | 26.14% |

*Conditions apply

apé
Xtra DLX >>> **BSIV**

PIAGGIO VEHICLES PRIVATE LIMITED
8th floor, Sky One, Kalyani Nagar, Pune - 411006
Tel.: (020) 3051 9800 | www.piaggio.co.in

HELLO PIAGGIO
1800 120 7520